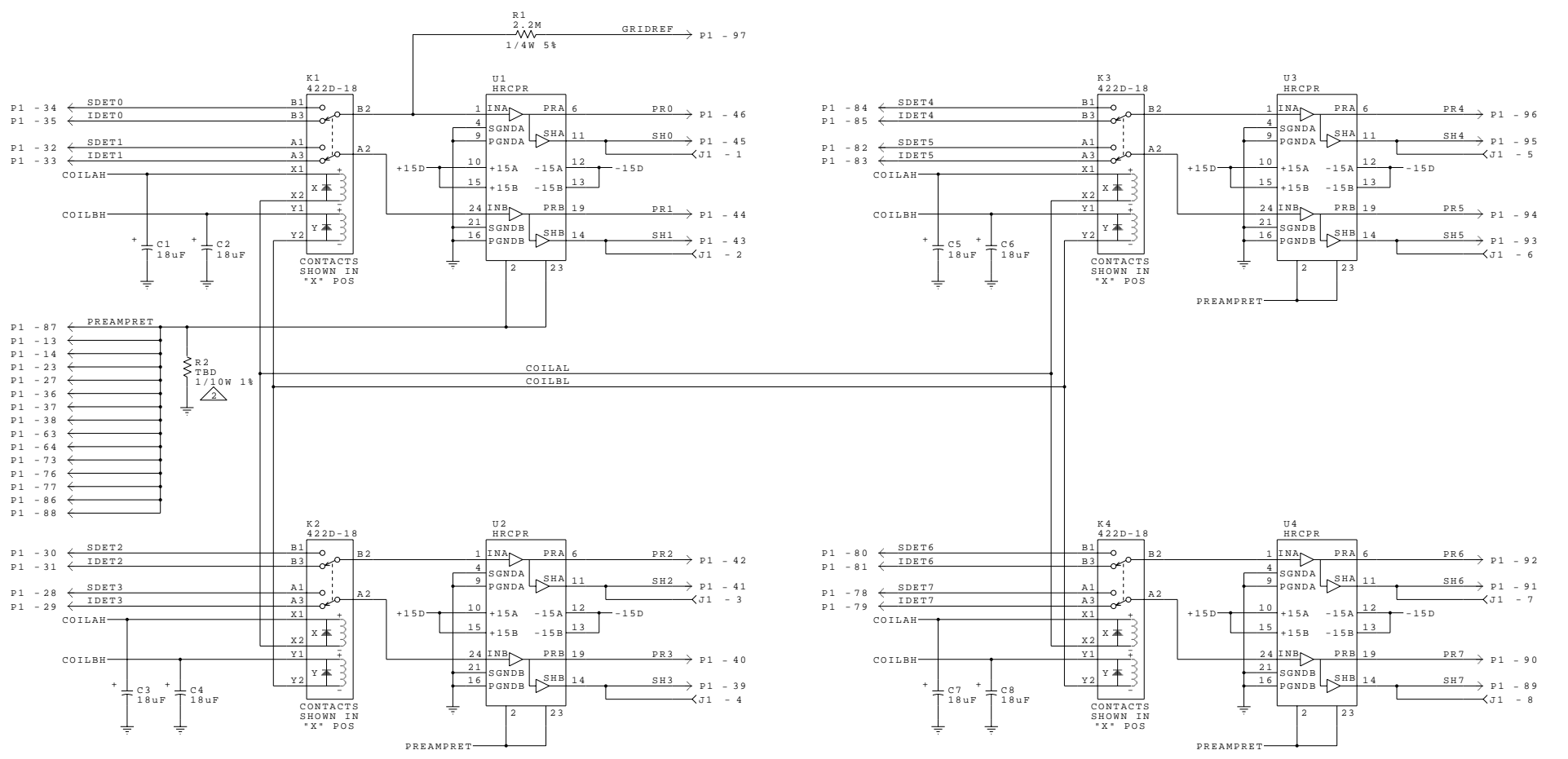


REVISIONS				
ZONE	LTR.	DESCRIPTION	DATE	APPROVED
	C	REVISED PER ECO #20206		



NOTES:
 1. UNLESS OTHERWISE SPECIFIED:
 ALL RESISTOR VALUES ARE IN OHMS, 1/3W +/-1%,
 ALL CAPACITOR VALUES ARE IN uF, 50V, +/-5%.
 SELECT AT TEST.

REMOVE BURRS AND BREAK SHARP EDGES UNLESS OTHERWISE SPECIFIED DIMENSIONS ARE IN INCHES	DRN RBC668 CHK R. DEFAVAD DATE 06/02/95 DATE 06/06/95	SMITHSONIAN ASTROPHYSICAL OBSERVATORY CENTRAL ENGINEERING CAMBRIDGE MA
TOLERANCES ON FRACTIONS DECIMALS ANGLES ± .XX ± °	DSGN APPD DATE	SCHMATIC, OCTAL HYBRID PREAMP
MACH. FIN: N/A	ENGR APPD D. MEAVER DATE 06/08/95	C CODE IDENT NO. 50944 DWG NO. HRC-5206 REV C
FIN: N/A MATL: N/A	PROJ APPD D.W. For R. MOORE DATE 06/08/95	SCALE NONE SCHEMA V3.34 SHEET 1 OF 3
NEXT ASSY: HRC-OV5256	CM S. DALY for K.D. 06/08/95	

REVISIONS				
ZONE	LTR.	DESCRIPTION	DATE	APPROVED
C		REVISED PER ECO #20206		

D

C

B

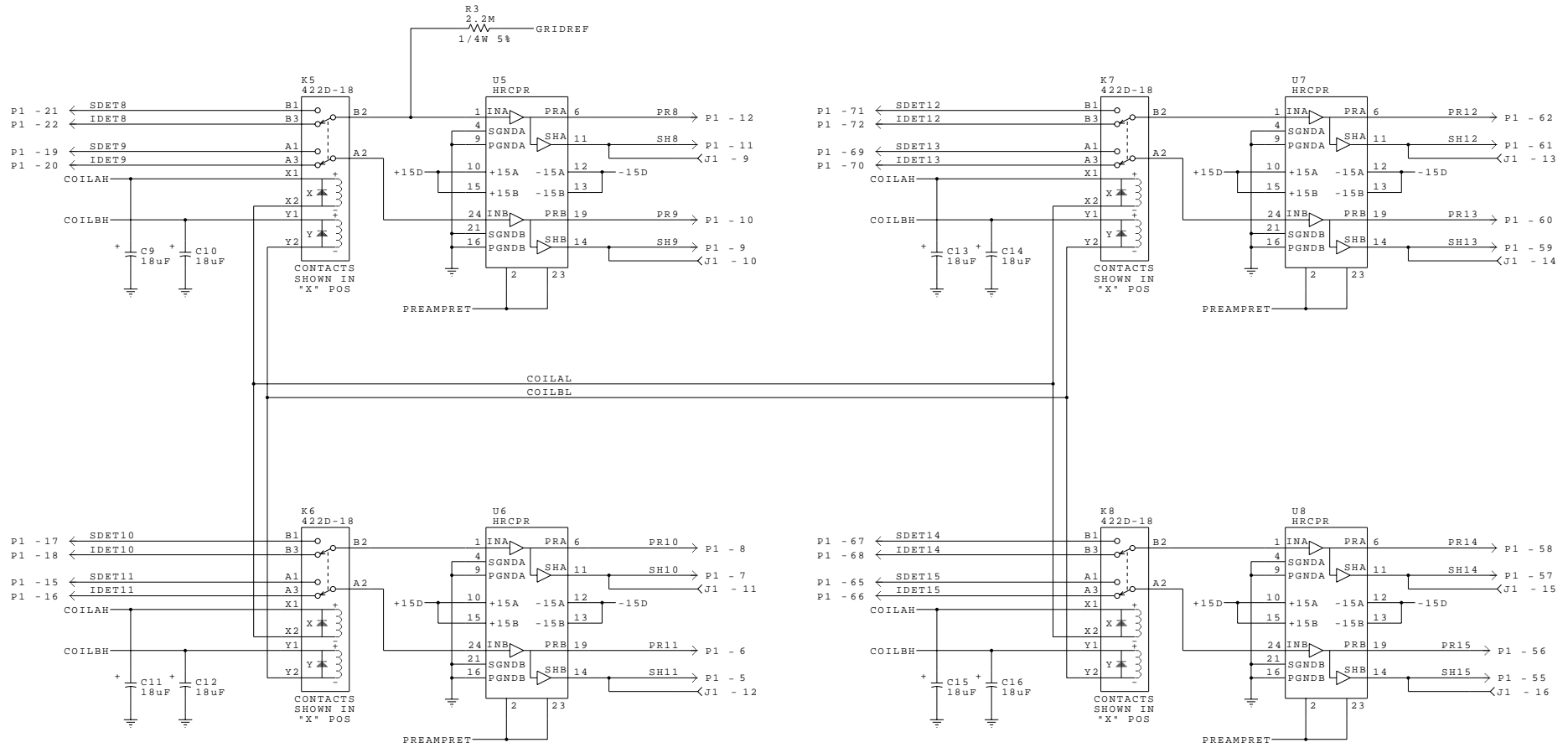
A

D

C

B

A



SMITHSONIAN ASTROPHYSICAL OBSERVATORY
 CENTRAL ENGINEERING CAMBRIDGE MA

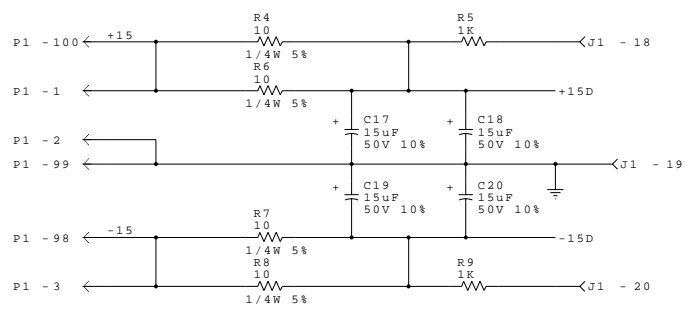
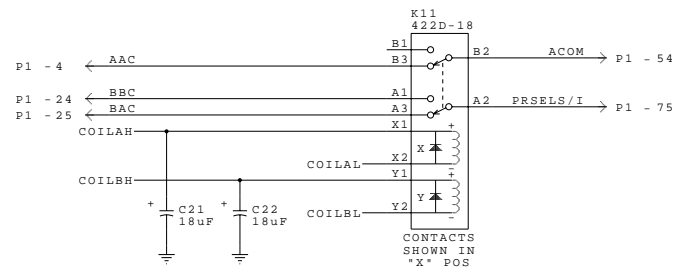
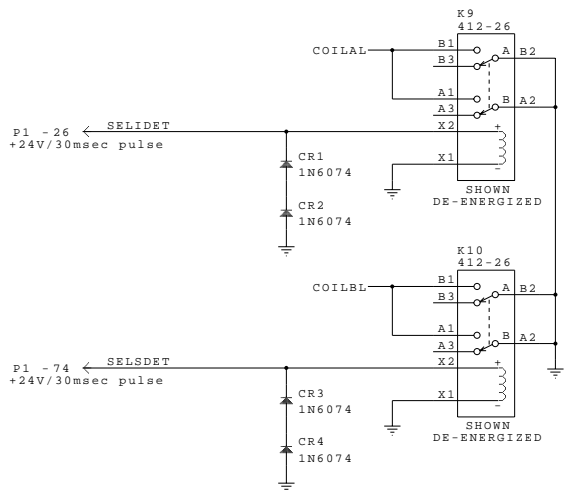
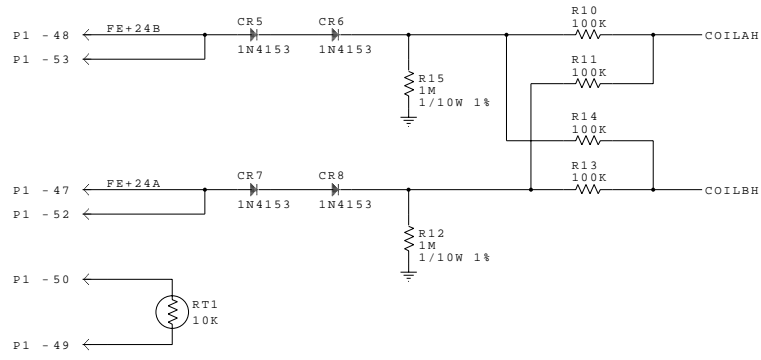
SCHEMATIC, OCTAL HYBRID PREAMP

C	CODE IDENT NO. 50944	DWG NO. HRC-5206	REV C
SCALE	NONE	SCHEMA V3.34	SHEET 2 OF 3

8 7 6 5 4 3 2 1

8 7 6 5 4 3 2 1

REVISIONS				
ZONE	LTR.	DESCRIPTION	DATE	APPROVED
	C	REVISED PER ECO #20206		



UNCONNECTED PINS	
J1	17
P1	51
U1	3,5,7,8,17,18,20,22
U2	3,5,7,8,17,18,20,22
U3	3,5,7,8,17,18,20,22
U4	3,5,7,8,17,18,20,22
U5	3,5,7,8,17,18,20,22
U6	3,5,7,8,17,18,20,22
U7	3,5,7,8,17,18,20,22
U8	3,5,7,8,17,18,20,22

POWER TABLE					
REF DES	DEVICE	+5	GND	VCC	VEE
U1, U2, U3, U4, U5 U6, U7, U8	HRCPR		4, 9, 21, 16	10, 15	12, 13

SMITHSONIAN ASTROPHYSICAL OBSERVATORY
CENTRAL ENGINEERING CAMBRIDGE MA

SCHEMATIC, OCTAL HYBRID PREAMP

C	CODE IDENT NO. 50944	DWG NO. HRC-5206	REV C
SCALE NONE	SCHEMA V3.34		SHEET 3 OF 3