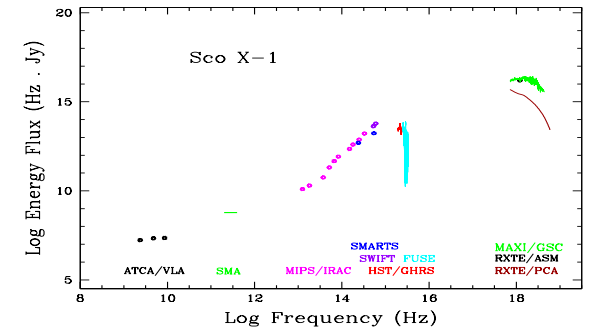
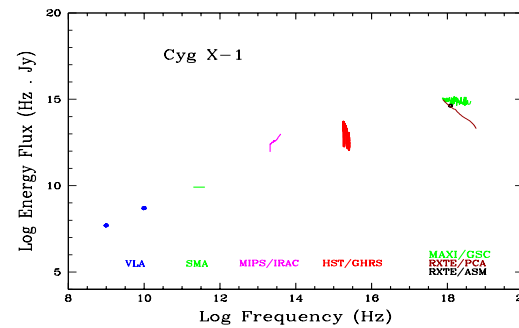
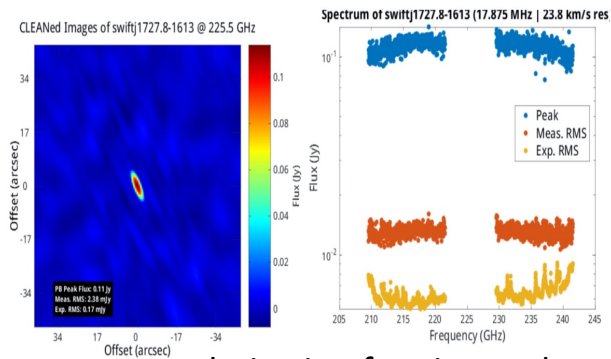


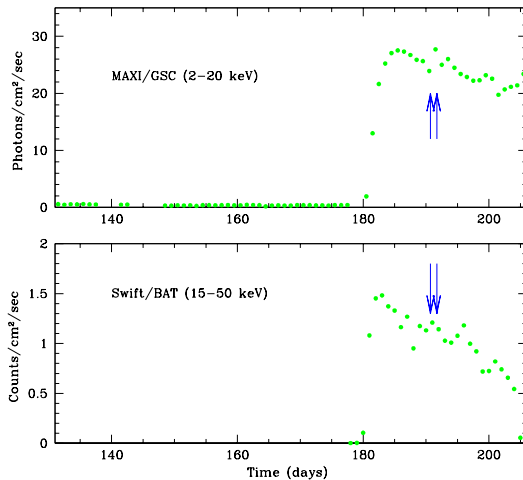
Observing micro-quasars with the SMA on Mauna Kea

Source info for: swiftj1727.8-1613 (primary target)



SMA measures polarization fraction and angle providing important information about jet structure and orientation.

SMA bridges a considerable gap between long wavelength radio and infrared



SMA can observe with quick response capturing early outburst behavior.

MAXI/GSC and Swift/Bat provide simultaneous high energy coverage.



Vrtilek et al. Atel #16230