

**Here.
There.
Everywhere.**

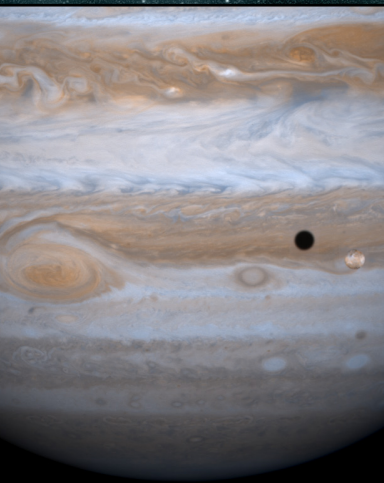


QUESTION:

What is it called when
an object blocks a
source of light?

www.nasa.gov

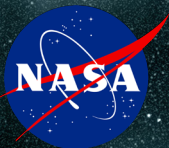
**Here.
There.
Everywhere.**



ANSWER: SHADOW

Shadows form dark areas as they fall across regions that are lit up, such as a beach on a sunny day or even the surface of planet like Jupiter that has a moon pass in front it.

<http://hte.si.edu/shadows>



**Here.
There.
Everywhere.**



QUESTION:

**What moves through
weeds in a field as
well as galaxies
billions of miles
away?**

www.nasa.gov

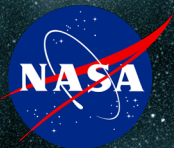


**Here.
There.
Everywhere.**

ANSWER: WIND

Winds form from the movement of air from regions where the pressure is high to where it is low. This can happen on Earth, as well as on other planets, around stars, and across galaxies.

<http://hte.si.edu/wind>



**Here.
There.
Everywhere.**



QUESTION:

**What shape can form
when something
moves faster than the
environment it is in?**

www.nasa.gov

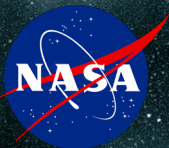
**Here.
There.
Everywhere.**



**ANSWER:
BOW WAVES**

Such cone-shaped waves are familiar sights in front of boats on Earth, but they can also be formed when objects move rapidly through air or even the space between the stars.

<http://hte.si.edu/waves>



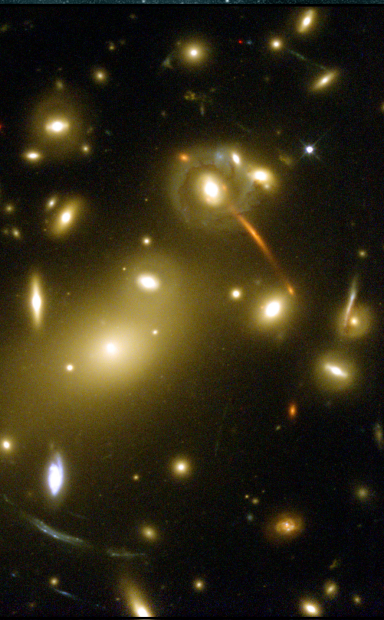
**Here.
There.
Everywhere.**



QUESTION:
What happens when
light is bent?

www.nasa.gov

**Here.
There.
Everywhere.**



ANSWER: LENSING

When light passes from one type of material to another, its path can be bent and the original image is distorted. Environments from eyeglasses to massive galaxies can cause lensing to take place.

<http://hte.si.edu/light>